



Whitley Court

3 BEDROOM END TERRACE / MID TERRACE

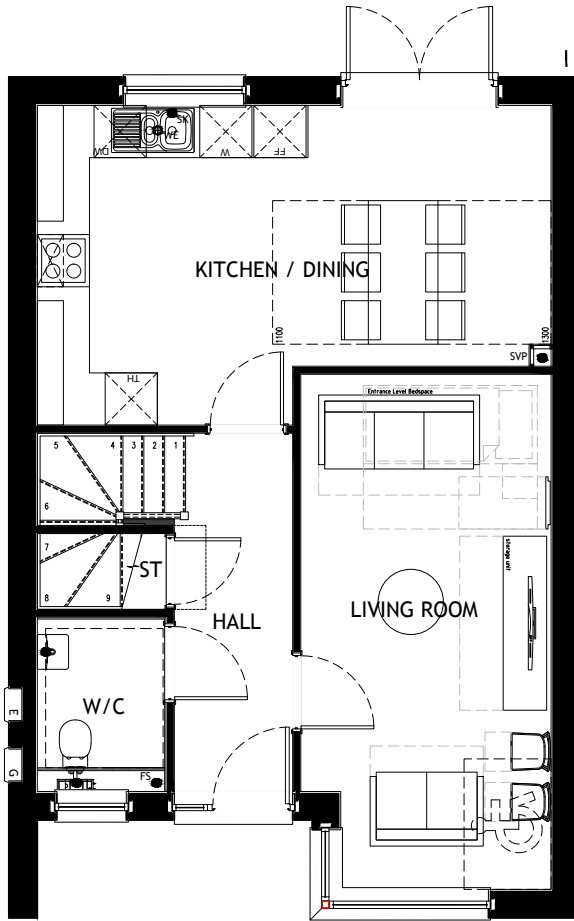
- Open plan kitchen and dining area with french doors overlooking a private rear garden
- Separate lounge area
- Downstairs cloakroom
- One double bedroom with en-suite
- Two single bedrooms
- Family bathroom
- Externally; fully enclosed rear garden and a driveway



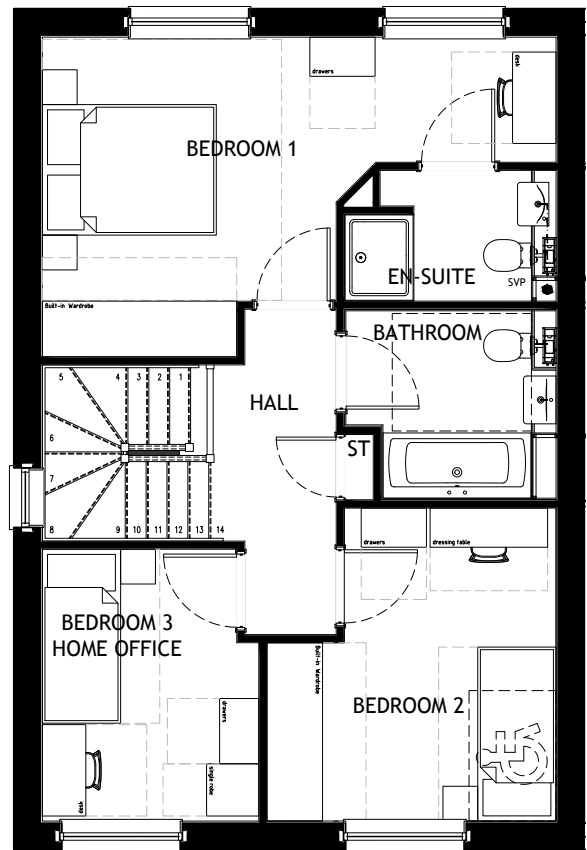
**BEACON
LIVING**



**BEACON
LIVING**



GROUND FLOOR PLAN



FIRST FLOOR PLAN

Whitley Court

**3 BEDROOM END
TERRACE / MID TERRACE**

DIMENSIONS	ROOM	METRIC
Ground Floor	Lounge	3m x 6m
	Kitchen/Diner	3.7m x 6m
	W/C	1.5m x 2m
First Floor	Bedroom 1 (incl. en-suite)	3.7m x 6m
	Bedroom 2	2.5m x 3.4m
	Bedroom 3	2.3m x 2.5m
	Family bathroom	2.2m x 2.5m

Computer generated images are for illustration purposes only. Please note all dimensions are subject to slight modifications and all dimensions are MAXIMUM. Whilst every effort has been made to ensure that the information contained here is correct, it is designed specifically as a guide and Beacon Living reserves the right to amend the specification as necessary and without notice. This does not constitute or form any part of a contract of sale. April 2022.